



BENIN CITY, EDO STATE

AN EDO STATE GOVERNMENT LEGACY PROJECT





A CITY BEYOND EXPECTATIONS

Welcome to Coral City, a visionary project of the Edo State Government (EDSG) situated in the southern neighbourhoods of Benin City. Coral City is a legacy project that spans an impressive 1,229.94 hectares, and can be conveniently accessed via Airport Road or the Benin-Sapele Road.

EXPERIENCE THE PERFECT BLEND OF MODERNITY, RECREATION, AND A VIBRANT COMMUNITY AT CORAL CITY.



Retail Area

Over 92 plots



Hospital

9 plots



Golf Course



Parks and Open Space

Over 29 plots



24/7 Electricity



Schools

8 plots



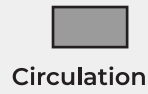
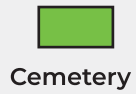
Lakes



Highspeed Internet



Great roads



Residential Medium Density

Residential Low Density

Educational

Existing



Industrial

Multifunctional Corridor

Public

Recreational



Religious

Special Residential

Utilities





A GREAT DESTINATION

Pedestrian-friendly streets offer safe and convenient connections between the neighbourhood centre and open spaces where every facility and world-class amenity are within walking distance. A vibrant and viable mix of retail, business, recreation, and community facilities, makes Coral City a great destination for residents and visitors.

RESIDENTIAL SPACES

Enjoy your ideal home within a diverse selection of modern properties where design excellence is achieved through the seamless integration of contemporary architectural styles.

There are a total of 1,012 residential plots covering a land area of 90.77 Hectares available for purchase now.





WE OFFER VARIOUS HOUSING OPTIONS

Coral City will offer a range of housing options to suit every lifestyle and budget. Our residential area will be designed to provide a comfortable and secure living environment for residents, with modern amenities and facilities. This includes **high-density**, **medium-density**, **low-density** and **comprehensive developments**.

HIGH DENSITY RESIDENTIAL PLOTS

Plots Available: 431

Size: Between 433.55 square metres
and 1,039.33 square metres

Specification: Bungalows



MEDIUM DENSITY RESIDENTIAL PLOTS

Plots Available: 422

Size: 564.53 square metres and 1,479.72 square metres

Specification: Single-dwelling buildings or 3-floor terrace buildings to be developed





LOW DENSITY RESIDENTIAL PLOTS

Plots Available: 138

Size: 979.30 square metres to 1,865.91 square metres

Specification: Semi-Detached buildings and Single Family Dwelling to be developed



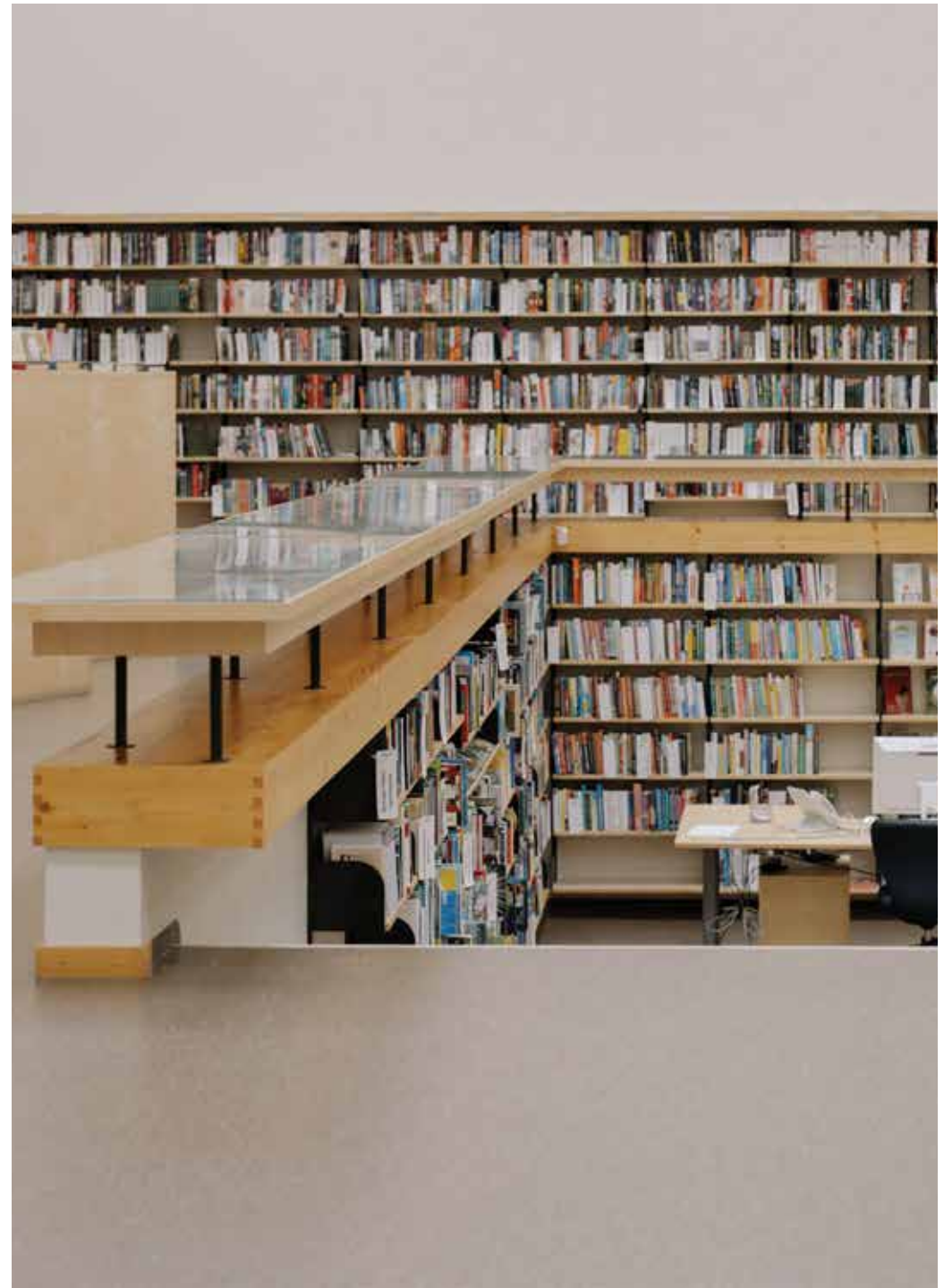




PUBLIC SPACES

Indulge in the convenience of various public services available at Coral City, including:

- Community Centre
- Fire Service Station
- Government Office
- Hospital
- International Conference Centre
- Library
- Neighborhood Square
- Police Post
- Police Station
- Primary Health Centre

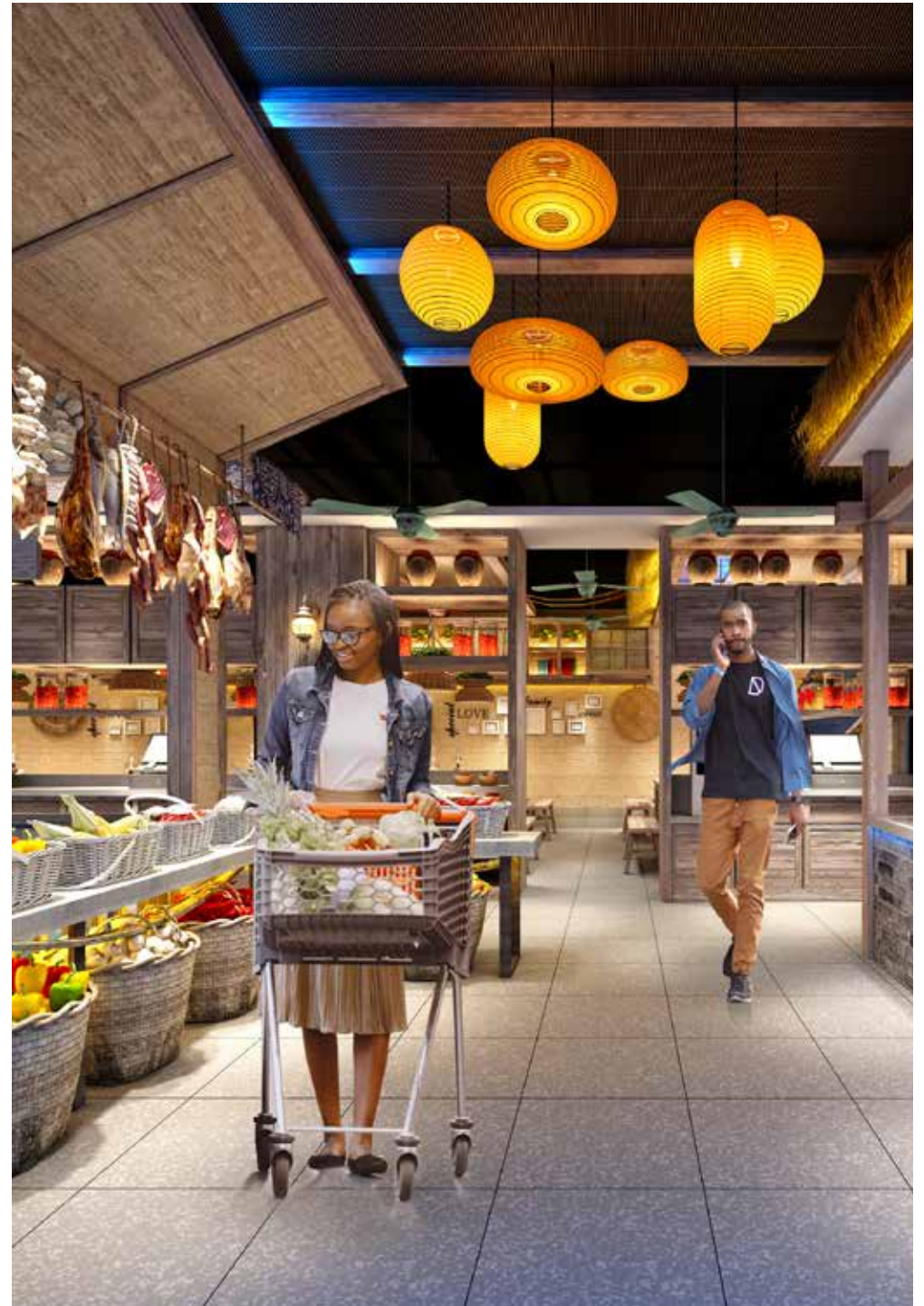


COMMERCIAL SPACES

Coral City provides a vibrant and dynamic commercial landscape, catering to your shopping, financial, and everyday needs. Enjoy the convenience of having these amenities within close proximity, creating a thriving and accessible community. Immerse yourself in the abundance of amenities and services at Coral City, including:

- Retail Shops
- Mall
- Banks
- Farmers' Market
- Neighbourhood Market
- Central Commercial Area
- Petrol Filling Station
- Shopping Complex



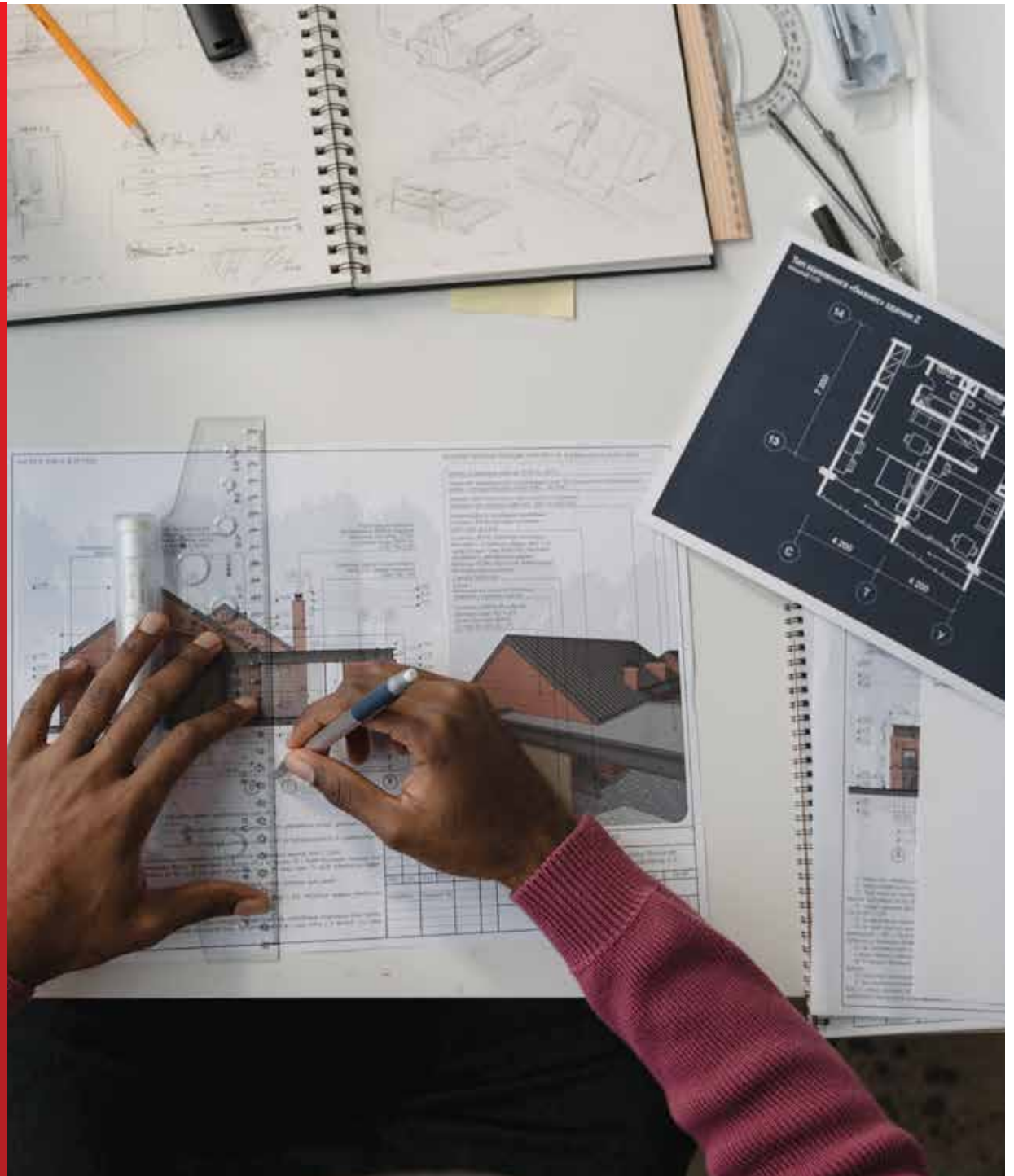


BUY PLOTS AND BUILD COMMERCIAL SPACES AND RESIDENTIAL COMPLEXES

With an estimated living population of 30,000, businesses within the City are ideally situated.

Comprehensive high, medium and low density plots offer developers the chance to build mini estates within the City

68 Commercial plots now selling





EDUCATIONAL SPACES

Coral City is dedicated to fostering a holistic learning environment, ensuring that your children receive the educational foundation they need to thrive.

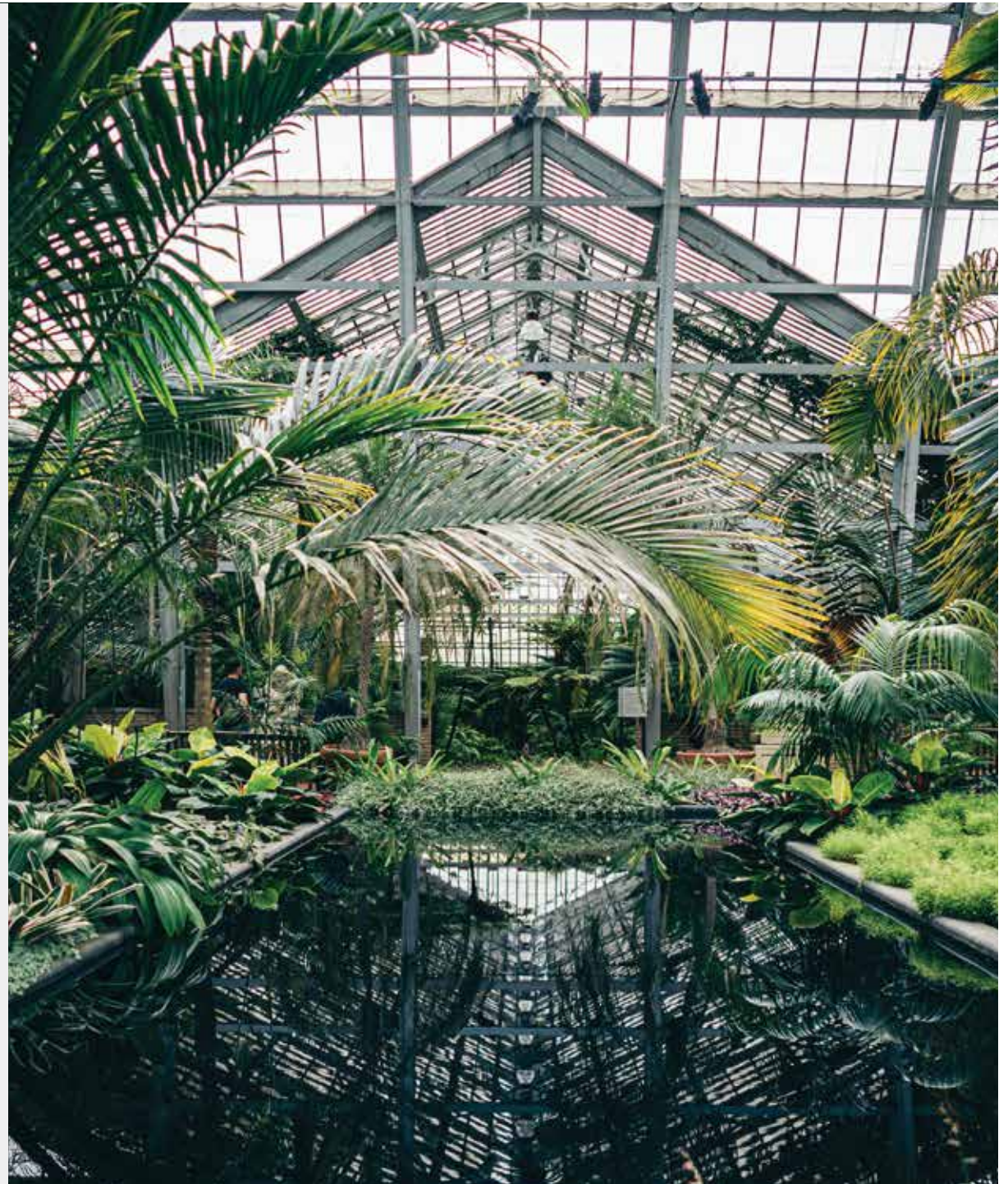
At Coral City, we prioritize the education and development of your children. Here, they can benefit from a range of excellent educational services, including:

- Nursery and Primary School
- Creche
- Secondary School
- Vocational Training Centre

INDUSTRIAL SPACES

Coral City presents an exceptional opportunity for businesses to thrive within its industrial space. It's time to position your business for long-term success and growth. Take advantage of the following specialized areas designed to support your entrepreneurial success:

- Agro-Processing Industry
- Enterprise Zone





RECREATIONAL SPACES

Coral City is committed to fostering a well-rounded lifestyle, providing ample opportunities for recreation, relaxation, and commemoration. Discover a multitude of options to suit your interests and preferences, ensuring that residents of all ages can find joy and fulfillment within our vibrant community. Experience a wide range of recreational services and facilities at Coral City, designed to enhance your leisure and well-being:

- Central Recreational Park
- Neighbourhood Parks
- Children's Playgrounds
- 18-hole Golf Course
- Exclusive Cemetery





BENIN CITY, EDO STATE

TO PURCHASE OR FOR MORE INFORMATION

Please call **+234 811 702 5515**, **+234 812 908 8344** or
send an email to info.mppud@edostate.gov.ng or
Info@newfrontier.com.ng

or visit us at

**The Ministry of Physical Planning, Housing and
Urban and Regional Development**

2nd Floor, Block C, Secretariat Complex. Sapele Road, Benin City, Edo State